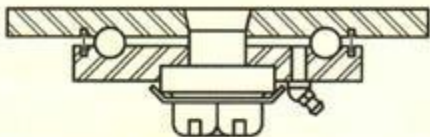


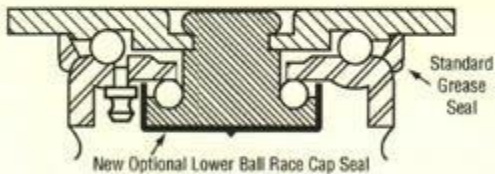
Precision Tapered Roller Bearings.



Extra Heavy Duty

An upper set of polished steel balls rotate in a hardened machined raceway. Radial thrust is absorbed by a precision tapered roller bearing. A 1" diameter king bolt with castle nut is pinned at the correct torque position when assembled. Series 28 Casters.

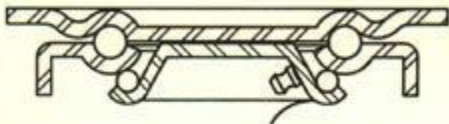
Double Ball Race



Medium Heavy Duty

Two sets of steel balls rotate in die-coined raceways. The upper top plate raceway absorbs direct downward forces and the lower king pin raceway absorbs side forces. The $\frac{3}{4}$ " diameter king pin is orbitally cold formed for superior strength. Series N22 & W26 Casters.

Lockweld® Double Ball Race Caster

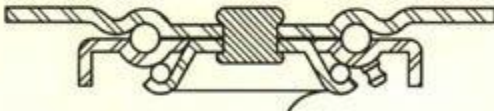


Medium Duty

A Fairbanks exclusive caster system replaces the king pin with a projected weld construction. This is accomplished by projection welding the lower cup directly to the top plate. Both the plate raceway and the lower formed cup raceway use hardened steel balls. Series 23 Casters.

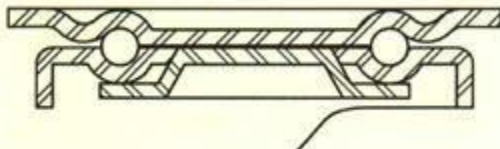
King Pin Double Ball Race

Light Medium & Heavy Duty



King Pin or Rivet type casters that will withstand both downward forces and absorbs side thrust. The lower cup raceway is bonded to the upper top plate raceway by either a staked rivet or a formed king pin. Series 03 light medium casters and Series 24 & 25 heavy duty casters.

Lockweld® Single Ball Race



Regular Duty

Economical all-purpose regular duty caster with unique Fairbanks caster system that replaces the king pin. Consisting of a single upper ball raceway and a lower thrust cup that is projection welded to the top of the plate. Series 21 Casters.

THE
Fairbanks®
COMPANY